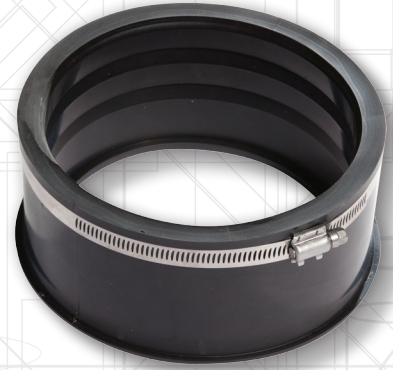


Fast Branch Tee

The Fast Branch Tee by Indiana Seal is the quick and hassle free solution for adding services to an existing line. The Fast Branch Tee is the solution for stocking one item to branch off of plastic, concrete, or clay pipes.

Available in 4", 6" IPS or PSM, and 8" PSM Branches



Fast Branch Tee



Fast Branch Tee in vylon pipe



Fast Branch Tee in clay pipe



Fast Branch Tee in polypropylene pipe



Fast Branch Tee in corrugated HDPE pipe



4", 6", & 8" Fast Branch Tee

Rigid PVC bell adapters available

Installation Instructions

The Fast Branch Tee by Indiana Seal allows you to connect service pipe to corrugated, closed profile, open profile and solid wall piping. This includes thermoplastics, clay and concrete materials.

Part Numbers:

FBT-4P 4" PSM Fast Branch Tee
FBT-4I 4" IPS Fast Branch Tee
FBT-6P 6" PSM Fast Branch Tee
FBT-6I 6" IPS Fast Branch Tee
FBT-8P 8" PSM Fast Branch Tee

- 1** Drill a perpendicular opening using the proper sized hole saw into the pipe. Remove any burrs that appear around the opening using a scraper, file, sand paper, pocket knife or similar scraping tool.
- 2** Remove the band clamp from the Fast Branch Tee. Fold and insert it into the drilled opening of the pipe. Unfold the FBT and position it into place and pull up on it until it stops on the inside wall of the pipe.
- 3** Measure the distance of the FBT from the inside pipe stop to the entrance. Using a belled end or plain end stub of pipe, mark that distance of insertion travel on the leading edge of pipe that will be inserted into the FBT. Cut off the section of the pipe to the desired length. Lightly bevel the leading end of the pipe for easier insertion.
- 4** Apply an even and smooth coat of certified pipe lubricant to the beveled end of the pipe and to the inside of the FBT.
- 5** Begin by pushing the beveled leading end of the pipe into the Fast Branch Tee by hand. With the use a hammer and block of wood, drive the lateral pipe into the FBT to the pre-marked insertion line on the pipe. Check to ensure the FBT is still positioned up against the inside wall of the pipe and adjust where needed.
- 6** Reinstall the band clamp to 60 in-lbs of torque and connect the service pipe.

Coring Hole Sizes:

4" FBT: 5.00" Hole Saw
6" FBT: 7.00" Hole Saw
8" FBT: 9.00" Hole Saw

Nominal Pipe Sizing:

8" Diameter and Larger
10" Diameter and Larger
15" Diameter and Larger